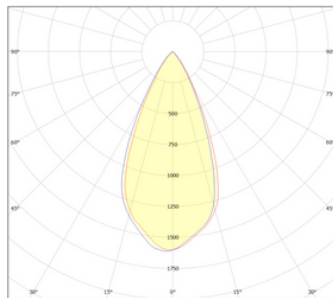
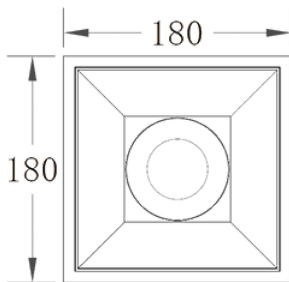


A modern, high-performing downlight suitable for commercial and residential applications. Die cast aluminium body with a high efficiency reflector and clear polycarbonate lens. High quality LED technology ensures the luminaire's long life while maintaining colour quality.



MECHANICAL	
Installation	Recessed
Housing Material	Aluminium
Lens Material	Clear Polycarbonate
Ingress Protection	IP65 (Below)
Luminaire Dimensions	180x180mm
Cut-Out Dimensions	165x165mm
Luminaire Depth	109mm

ELECTRICAL	
Driver Included	Yes
Voltage Input	230V AC
Drive Current	350mA

LIGHT SOURCE	
LED Manufacturer	Bridgelux
Beam Angle	60°
Luminaire Lumens	3000K 3336lm 4000K 3603lm
Luminaire Power	45W
Colour Rendition (CRI)	Ra 92
Colour Consistency	SDCM 3
Lifetime	L90 B10 60,000hrs



LUMINAIRE OPTIONS

CCT	CODE	COLOUR	CODE	REFLECTOR	CODE	DIMMING	CODE
2700K	W27	WHITE	W	WHITE	W	TRAILING EDGE	T
3000K	W30	BLACK	B	BLACK	B	1-10V	A
4000K	W40	CUSTOM	C	MATT SILVER	MS	DALI	D
				GOLD	G	CASAMBI	C

CODE GENERATION

	LUMINAIRE	CCT	COLOUR	REFLECTOR	DIMMING
CODE	AM-1583	W30	W	B	T
REQUIREMENTS	AMELIA	3000K	WHITE	BLACK	TRAILING EDGE

COMPLETE CODE = AM-1583-W30-W-B-T