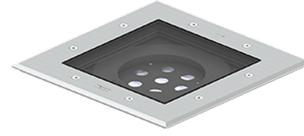


**KIOS 6 (KI-60588)****Product description**

With recessing box / driver - Embross frame - RGBW

**Luminaire Structure**

- Die-cast aluminium housing
- Pre-treated before powder coating ensuring high corrosion resistance
- 5.5 mm thick front ring in grade 316 stainless steel
- Single cable entry, through wiring upon request
- Stainless steel fasteners in grade 304 with zinc flake coating (ZFC)
- Durable silicone rubber gasket
- Clear toughened glass
- High-efficiency PMMA lens
- Integral control gear
- Recessing box in high-density polyethylene is included
- Suitable for drive-over with a maximum load of 2000 kg
- Vehicles with pneumatic tires can drive over the luminaire but the speed must not exceed 50 km/h
- Load is transferred by the housing to the foundation
- The distance between the luminaire and the illuminated surface should be at least 0.5 m

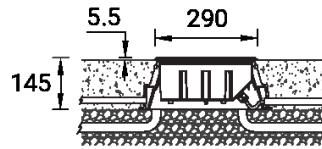
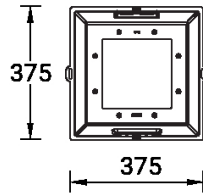
**Optic****Product colour**

**KIOS 6 (KI-60588)**

**Technical information**

<b>Material</b>	Stainless Steel	<b>Input voltage</b>	220-240 V 50/60 Hz	<b>Dimming type</b>	DMX, DMX/RDM
<b>Light source</b>	7 LED	<b>Optic</b>	N, M, E	<b>Product colours</b>	Stainless Steel
<b>Power</b>	29 W	<b>Optic value</b>	21°, 35°, 26°x48°	<b>Weight</b>	8.4 kg
<b>Lumen</b>	1063 - 1299 lm	<b>CCT / CRI</b>	RGBW30, RGBW40	<b>Operating temperature</b>	-20 °C to 40 °C
<b>Efficacy</b>	37 - 45 lm/W	<b>Bug</b>	B0-U5-G0	<b>Through wiring</b>	Single cable entry, through wiring upon request
<b>Driver option</b>	Integral control gear	<b>ULR</b>	100%	<b>Lens / Reflector / Optic</b>	Clear toughened glass, High-efficiency PMMA lens
<b>Driver</b>	Constant current (CC)	<b>ULOR</b>	100%		

**KI-60588**



**Accessories**



DMX Control System  
Control-DMX



DMX/RDM Control System  
Control-DMX-RDM