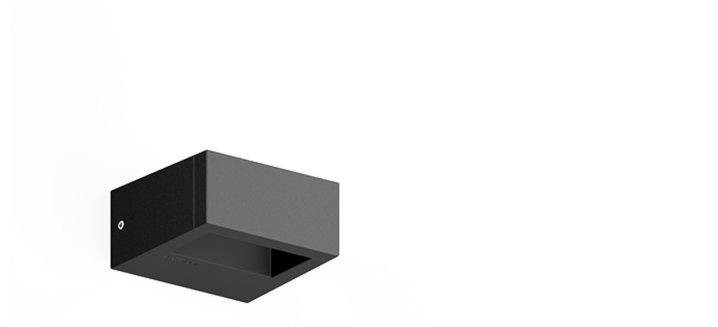


AUGUSTA 1 (AUG-30001) (Version 1)**Product description**

102x50 mm - 95 mm

**Luminaire Structure**

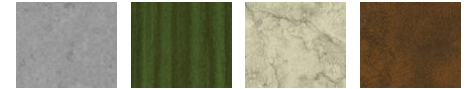
- Die-cast aluminium housing
- Pre-treated before powder coating ensuring high corrosion resistance
- Single cable entry
- Stainless steel fasteners in grade 304 with zinc flake coating (ZFC)
- Durable silicone rubber gasket
- Toughened glass
- Integral control gear
- Optional surface mounting box for easy wiring or conduit connection when wiring from behind is not possible

Optic**G****Product colour**

01 - Black (RAL 9011) 02 - Dark Grey (RAL 7043) 03 - White (RAL 9003) 05 - Matt Silver (RAL 9006)



06 - Bronze (RAL 6014)

Special finishes upon request

SU01 - Concrete - Urban SU02 - Softscape - Urban SU03 - Stone - Urban SU04 - Corten - Urban



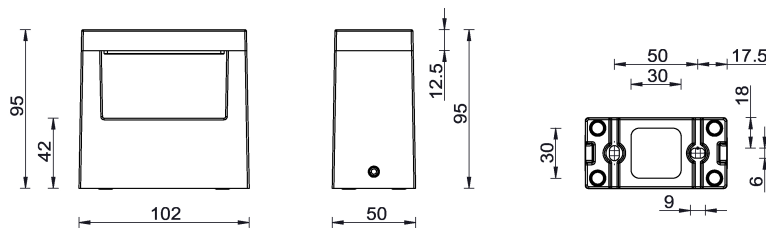
SW01 - Oak - Woodland SW02 - Walnut - Woodland SW03 - Pine - Woodland

AUGUSTA 1 (AUG-30001) (Version 1)

Technical information

Material	Aluminium	Optic value	70°x114°	Operating temperature	-20 °C to 40 °C
Light source	18 LED	CCT / CRI	3000K CRI80, 4000K CRI80	Through wiring	Single cable entry
Power	9 W	Bug	B0-U0-G0	Lens / Reflector / Optic	Toughened glass
Lumen	371 - 397 lm	ULR	0%	MacAdam Ellipse	3 SDCM
Efficacy	41 - 44 lm/W	ULOR	0%	Lifetime L90B10 (hours)	> 23,000
Driver option	Integral control gear	CIE flux code n°3	96	Lifetime L80B10 (hours)	> 45,000
Driver	Constant current (CC)	Dimming type	On/Off	Lifetime L80B50 (hours)	> 49,000
Input voltage	220-240 V 50/60 Hz	Product colours	Black, Dark Grey, White, Matt Silver, Bronze, Concrete - Urban, Softscape - Urban, Stone - Urban, Corten - Urban, Oak - Woodland, Walnut - Woodland, Pine - Woodland	Variants (On/Off)	Compatible with EN/ IEC 60598-2-22: Suitable for emergency installations as central supply, non-maintained (Z0)
Optic	G				

AUG-30001



Accessories



Surface mounting box for easy cabling (AUGUSTA 1)
SCE-AUGUSTA-1