

MONDOVA 4 (MO-80012)



Product description

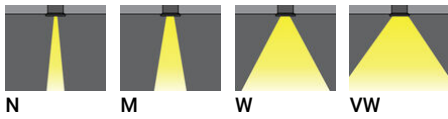
Flat frame



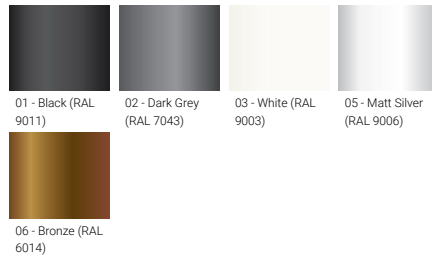
Luminaire Structure

- Die-cast aluminium housing
- Pre-treated before powder coating ensuring high corrosion resistance
- Single cable entry
- Stainless steel fasteners in grade 304 with zinc flake coating (ZFC)
- Durable silicone rubber gasket
- Clear toughened glass
- High-efficiency optical reflector
- Integral control gear

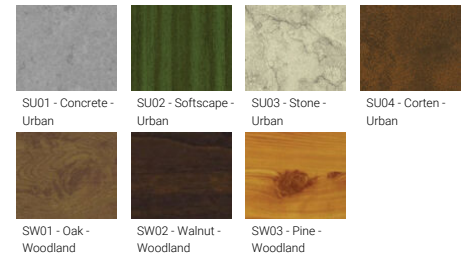
Optic



Product colour



Special finishes upon request



MONDOVA 4 (MO-80012)

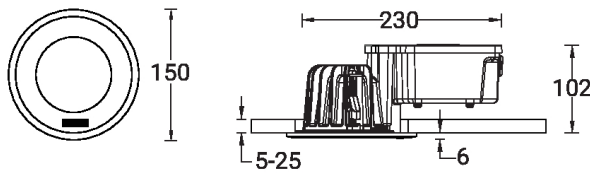
Technical information

Material	Aluminium
Light source	1 COB
Power	21 W
Lumen	1726 - 1992 lm
Efficacy	82 - 95 lm/W
Driver option	Integral control gear
Driver	Constant current (CC)
Input voltage	220-240 V 50/60 Hz

Optic	N, M, W, VW
Optic value	18°, 28°, 47°, 70°
CCT / CRI	3000K CRI80, 4000K CRI80
Bug	B1-U0-G0, B2-U1-G0
ULR	0%
ULOR	0%
CIE flux code n°3	100, 99
Dimming type	On/Off, 1-10V, DALI

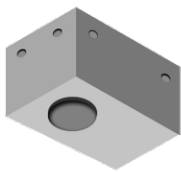
Product colours	Black, Dark Grey, White, Matt Silver, Bronze, Concrete - Urban, Softscape - Urban, Stone - Urban, Corten - Urban, Oak - Woodland, Walnut - Woodland, Pine - Woodland
Weight	1.2 kg
Operating temperature	-20 °C to 40 °C
Through wiring	Single cable entry
Lens / Reflector / Optic	Clear toughened glass, High-efficiency optical reflector
MacAdam Ellipse	3 SDCM
Lifetime L90B10 (hours)	> 55,000
Variants (On/Off, 1-10V, DALI)	Compatible with EN/ IEC 60598-2-22: Suitable for emergency installations as central supply, non-maintained (Z0)

MO-80012



Ceiling cut hole Ø140mm.

Accessories



Concrete box modification upon request
CONCRETE-BOX



DALI Control System
Control-DALI