

## STEAMER 1 (SE-90002-NZ)



### Product description

Rectangular - Medium



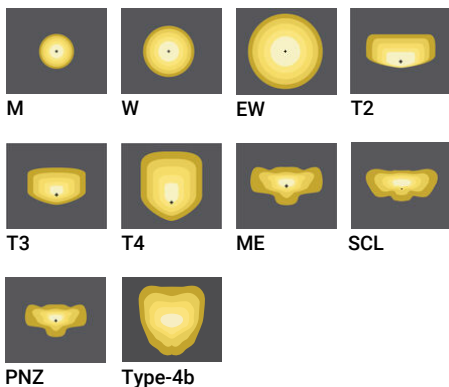
### Luminaire Structure

- Die-cast aluminium housing
- Pre-treated before powder coating ensuring high corrosion resistance
- Single cable entry
- One IP68 connector supplied with 0.5 m of 3x1.0 sqmm outdoor cable

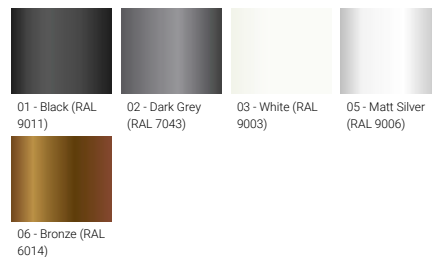
- Stainless steel fasteners in grade 304 with zinc flake coating (ZFC)
- Durable silicone rubber gasket
- Clear toughened glass
- High-efficiency PMMA lens

- Integral control gear
- Surge protection 10kV

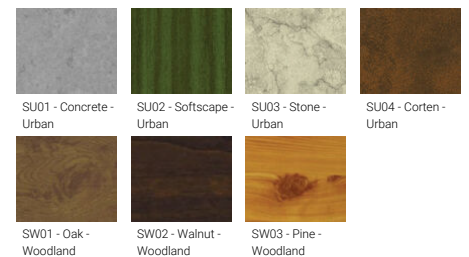
### Optic



### Product colour



### Special finishes upon request



### Technical information

<b>Material</b>	Aluminium
<b>Light source</b>	2 x 24 LED
<b>Power</b>	29W, 54W, 78W & 105 W
<b>Lumen</b>	3298 - 14374 lm
<b>Efficacy</b>	113 - 136 lm/W
<b>Driver current</b>	175mA, 350mA, 525mA & 700mA
<b>Driver option</b>	Integral control gear
<b>Driver</b>	Constant current (CC)
<b>Input voltage</b>	220-240 V 50/60 Hz
<b>Weight</b>	10.1 kg
<b>Operating temperature</b>	-20 °C to 50 °C

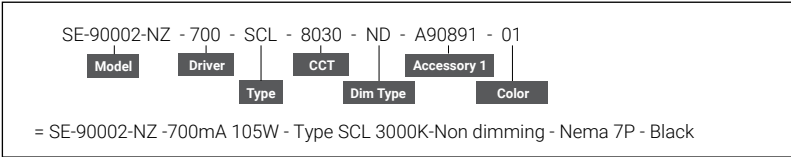
<b>Optic</b>	EW(105°x115°), M(30°), W(57°), T2(136°x51°), T3(119°x86°), T4(102°x74°), ME(137°x58°), T4B(101°x52°), PNZ(143°x66°), SCL(147°x68°)
<b>CCT / CRI</b>	3000K CRI80, 4000K CRI80
<b>Dimming type</b>	On/Off, DALI
<b>Product colours</b>	Black, Dark Grey, White, Matt Silver, Bronze, Concrete - Urban, Softscape - Urban, Stone - Urban, Corten - Urban, Oak - Woodland, Walnut - Woodland, Pine - Woodland
<b>Cable</b>	One IP68 connector supplied with 0.5 m of 3x1.0 sqmm outdoor cable

<b>Through wiring</b>	Single cable entry
<b>Lens / Reflector / Optic</b>	Clear toughened glass, High-efficiency PMMA lens
<b>MacAdam Ellipse</b>	3 SDCM
<b>Lifetime L90B10 (hours)</b>	> 90,000
<b>Lifetime L80B10 (hours)</b>	> 90,000
<b>Lifetime L80B50 (hours)</b>	> 90,000

**STEAMER 1 (SE-90002-NZ)**

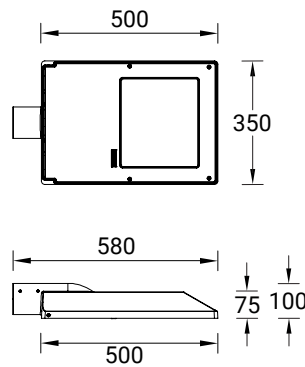
**Product variants**

**Ordering guide sample**



Model	Output	Distribution	CRI/CCT	Dimming	Accessory	Colours finish
SE-90002-NZ	175 mA 29 W	M	8030	ND	A91776 Double adjustable 60°	01 Black
	350 mA 54 W	W	8040	DA	A91176 Double arm mount	02 Dark Grey
	525 mA 78 W	EW			A91576 Double arm mount	03 White
	700 mA 105 W	T2			A91676 Single adjustable 60°	05 Matt silver
		T3			A91076 Single arm mount	06 Bronze
		T4			A91076-L Single arm mount	S - Special finish
		ME			A91476 Single arm mount	
		PNZ			A92276 Triple arm mount - Type 1	
		SCL			A90531 Integrated house side shield Hss)	
		T4B			A30160 Arm wall mount adjustable 60°	
					A90131 Bird deterrent spikes (upon request)	
					A90891 NEMA 7 (upon request)	

**SE-90002-NZ**



**STEAMER 1 (SE-90002-NZ)****Accessories**

Double adjustable 60°  
**A91776**



Double arm mount  
**A91176**



Double arm mount  
**A91576**



Triple arm mount - Type 1  
**A92276**



Single adjustable 60°  
**A91676**



Single arm mount  
**A91076**



Single arm mount  
**A91476**



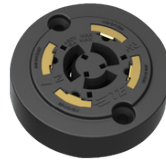
Arm wall mount adjustable 60°  
**A30160**



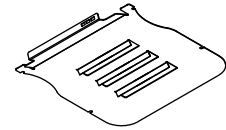
Single arm mount  
**A91076-L**



Bird deterrent spikes (upon request)  
**A90131**



NEMA 7 (upon request)  
**A90891**



Integrated house side shield (HSS)  
\*\*Cannot be used with optic (M) (W)  
**A90531**